



Journal of ARMC

June, 2014
Volume 4, Issue 1

Arrowhead Regional Medical Center, 400 North Pepper Ave, Colton, CA 92324
ARMC Website: <http://www.arrowheadmedcenter.org>

INSIDE THIS ISSUE

- 1 History of Medicine
- 4 How I Do It- Assessing Safety for Release of a 5150
- 5 Spotlight on Research
- 6 Fascinating Case
- 7 Innovations in Medicine
- 9 Resident Commentary
- 11 Research Projects
- 23 @ Your Library
- 24 Important Numbers & Events

HISTORY OF MEDICINE: Endotracheal Intubations

Andrew Crouch D.O. PGY II
Emergency Medicine

Many advances in modern medical sciences have their roots in ancient medicine. The art of tracheal intubation and airway management is no exception. Endotracheal intubation is a lifesaving, invasive procedure in which a tube is placed within the trachea to provide a definitive airway and respiratory support.

This technique has become commonplace within the emergency department, intensive care unit and operating room. Before intubation, airway occlusion and respiratory compromise meant certain death for the patient. The placement of tube to maintain the airway can prevent death in such scenarios. Like many other medical therapies, intubation has been discovered, forgotten, and then re-invented throughout the ages. One cannot discuss this history of endotracheal intubation without first reviewing the history of tracheostomies.

The earliest accounts of airway management detail surgical techniques of cutting the trachea to allow the passage of air. These writings date back to ancient Egypt in approximately 3600 BC when Imhotep described many surgical procedures such as tracheostomies.¹ Later in ancient Greece, Hippocrates wrote of similar techniques. These early tracheostomies were also written about in ancient Rome and throughout the Middle Ages.² There is even an account of Alexander the Great saving a dying soldier by cutting his trachea with his sword. Most early literature warned against attempts at tracheostomies with very few accounts of successful operations. Before the advent of modern antibiotics and sterile techniques, the prevalence of secondary infections and death were very high. During the 1800s outbreaks of *Diphtheria* fueled further developments which resulted in additional

successes. It was not until the twentieth century that surgical technique evolved to make placement of tracheostomy a common practice.³

The technique of orotracheal intubation, the placement of a tube through the mouth into the trachea, developed significantly later. Throughout history there were many accounts of mouth-to-mouth resuscitation; however, the utilization of a tube inserted into the trachea were rare and anecdotal. For instance, during the 1500s, a physician by the name of Paracelsus wrote of the use of a tube placed in the mouth of a patient connected to “bellows.”⁴ In 1754, Benjamin Pugh documented the use of a coiled wire covered in soft leather, which he called an “air pipe” that was introduced blindly through the oral pharynx to resuscitate an asphyxiated infant.⁴ Multiple later accounts documented a similar technique. One such account was made by Chaussier, a gynecologist, in the late 1700s in which he also used self-designed tubes to resuscitate an infant.¹ Charles Kite, in 1788, was first to describe the use of endotracheal tubes in the resuscitation of drowning victims. These tubes could be inserted blindly through the mouth or nose.¹ Cogan and Hawes from the Royal Humane Society later stated that the use of a tracheal tube was more efficacious than mouth-to-mouth resuscitation in drowning victims.¹

In the mid 1800s, non-surgical airways and the use of mechanical devices to visualize the glottis became prevalent in the literature. Manuel Garcia, a Spanish singing professor, detailed the first account of laryngoscopy in 1854. He used indirect laryngoscopy with two mirrors using the sun as an external light source.⁵ Again, advances were fueled by the devastating complications of *Diphtheria*. Eugène Bouchut, a pediatrician, developed the first technique of non-surgical intubation

in 1858. This highly criticized technique used a blindly placed metal. Without modern anesthesia, ventilators and paralytics, techniques were flawed and associated with large numbers of complications. In 1885 Joseph O’Dwyer, an American pediatrician and obstetrician, continued the development of this technique of blind intubation by developing a series of metal tracheal tubes for use with patients suffering from *Diphtheria*. These tubes were later used to combat other illnesses such as tracheal stenosis.¹

In 1895 Alfred Kirstein performed the first direct laryngoscopy described in the literature. His invention, the “autoscope,” was a modified esophagoscope.⁶ This success gave rise to more devices for use within the surgical setting. Gustav Killian constructed a special laryngoscope for surgical use. This apparatus involved the use of a spatula that was suspended from a hook with the head in a hanging position the technique was deemed “suspension-laryngoscopy.”⁵ Chevalier Jackson reported the use of direct laryngoscopy to intubate the trachea in 1913.¹ Jackson’s version of the laryngoscope used a blade with the light source at the distal end of the device and had a removable component, which could allow passage of a tube.⁵ An American anesthesiologist, Henry H. Janeway, also published his results of tracheal intubation under direct visualization in 1913. He later developed a laryngoscope specifically designed to intubate the trachea to protect the airway during surgery. Janeway’s laryngoscope incorporated batteries into the handle and had a curved tip. This device was largely responsible for the popularization the use of tracheal intubation and direct laryngoscopy in surgery.¹ During this time period multiple other scopes and techniques were developed most using similar shapes to visualize the glottis.

Sir Ivan Whiteside Magill developed blind Nasal Tracheal intubation in conjunction with Sir Harold Gillies and Stanley Rowbotham during World War I.⁵ The technique was performed blind on an awake patient in a method very similar to that used by current emergency medical personnel in the field today. Magill also invented the Magill forceps to help facilitate nasotracheal intubation. During World War I, there was a large drive within the medical community to refine the approach to intubation due to the large number of facial and neck injuries seen as a result of new modern warfare. In the early twentieth century, many new designs of laryngoscope began to emerge. In the 1940s, laryngoscope blades took a great leap toward with the development of the Macintosh and Miller blades.¹ Robert Miller developed a straight blade in 1941 that is still used today. The Miller blade was designed to be placed with the tip on the epiglottis, lifting it to view the cords. The Macintosh blade, introduced in 1943 by Robert Macintosh, was one of the first curved blades designed to limit contact with the epiglottis thus decreasing the amount of vagal stimulation during intubation. During this time period, muscle relaxants were developed for surgery. Refinements of Curare, a non-depolarizing competitive antagonist of acetylcholine receptors, allowed intubation to become a common tool used during surgery.⁵

In the twenty first century, new adaptations using video assisted laryngoscopy became more prevalent. Due to the fact that the glottis is clearly visible in only 90% of direct laryngoscopy attempts, many new adaptive devices were created.⁷ The strong drive to use video to augment visualization during intubation attempts gave rise to many products such as the Glidescope. The Glidescope, introduced in 2001, was the first commercially available video laryngoscope. John Allen Pacey, a general surgeon,

designed the device. The scope utilizes an acute fixed angle with a video device attached to the end of laryngoscope. This gives the operator a clearer view of the vocal cords. The angle allows for better visualization and a high resolution LCD screen assists the operator to view the cords.⁷ Multiple studies have noted that the use of the Glidescope is able to provide visualization of the glottis without the oral, pharyngeal and laryngeal axes being aligned⁷. A 2013 study at Beth Israel Medical Center reviewed cases of urgent intubations by experienced providers using direct laryngoscopy versus the Glidescope. In the study the Glidescope was shown to provide improved rates of first attempt intubations, 91% vs 68% with a $P < 0.01$. Other parameters such as number of repeated attempts and esophageal intubations showed significant improvements with the usage of the Glidescope.⁸ Since the introduction of the Glidescope there have been many other devices created that use video and fiber optics to augment the intubation process. These advancements continue to revolutionize medicine, but some question if video assisted devices will ever replace direct laryngoscopy as the primary technique of endotracheal intubation. Intubation has evolved greatly over the years. What began as a last ditch effort in attempts at resuscitation has become an invaluable life-saving tool. These techniques and devices are used on a regular basis in the hospital and in the pre-hospital setting, both in resuscitation efforts and surgical procedures. For contemporary healthcare providers it has become difficult to imagine medical care before these techniques became commonplace and even harder to imagine functioning without them. As time moves forward, medicine will continue to improve with better technology. However, to truly understand the technology of today, it is

necessary to take a look backwards to reflect on how it has evolved over the ages.

References

1. Szmuk, P. A brief history of tracheostomy and tracheal intubation, from the Bronze Age to the Space Age. *Intensive Care Med* (2008) 34:222-228
2. O Rajesh, R Meher. *Historical Review of Tracheostomy*. The Internet Journal of Otorhinolaryngology. 2005 Volume 4 Number 2.
3. Stock C. What is past is prologue: a short history of the development of the tracheostomy. *Ear Nose Throat* 1987; 66 (4) 166-169.
4. White, G. The evolution of Endotracheal and Endobronchial Intubation. *British Journal of Anaesthesia*: 1960 32,235
5. Doyle, J. A brief History of Clinical Airway Management” *Anesthesiology News* 2008
6. Reinhard M “Alfred Kirstein (1863-1922) - Pioneer in Direct Laryngoscopy” *Anesthesiol Intensivmed Notfallmed Schmerzther*. 1995 Jun;30(4):240-6.
7. Sakles, John “Tracheal Intubation in the Emergency Department “ A Comparison of Glidescope Video Laryngoscopy to direct Laryngoscopy in 822 intubations” *The journal of Emergency Medicine* 2012 Apr;42(4):400-5
8. Kory, P “The impact of video laryngoscopy use during urgent endotracheal intubation in the critically ill” *Anesth Analg*. 2013 Jul;117(1):144-9

HOW I DO IT: Assessing Safety for Release of a 5150 Written for Danger to Self

Keith Gordon, M.D.

Chair, Psychiatry Residency Program Director

1. Determine degree of impulsiveness and disorganization:
 - A. Danger to Self (DTS) is not just an issue of suicide. Patients in a delirium, manic state, or drug intoxicated state often exhibit impulsive and disorganized behavior which can result in serious self-harm.
- B. When suicidal ideation is present, impulsiveness and disorganization increase the risk that suicidal ideation is translated to a suicide event.
2. Assess about recent and current suicidal ideation
 - A. Always assess the basics; intent, plan and lethality.
 - B. Ask if their thoughts of suicide have changed between the time the 5150 was written and the time of assessment.
 - C. Determine what role drug/alcohol use or intoxication might have played in creating the issues of DTS, resulting in a 5150.
3. Ask if the patient has a plan to maintain safety if released from the 5150 for DTS.
 - A. This might include staying with family for a few days even though they live independently.
 - B. This also might include removal of guns, giving possession of medications to family or friends to dispense so access to supply is limited.
4. Ask if they are confident that they will not harm themselves if released from the 5150 and have them explain what supports their confidence.
 - A. You might hear, “I saw the look of fear in my children’s eyes when they came to the ER and I will never put them through that again,” or “I’m not going to let them do this to me.”
 - B. For many patients, the 5150 process becomes a time for reflection and reassessment leading to positive outcomes.
5. Whenever possible, obtain collateral information from family.

- A. Overwhelmingly, patients give me permission to contact family for collateral data. If they won't, my safety antennae go up and I would probably be reluctant to release the hold.
- B. Families will often offer support that was not available prior to a self-destructive event. This can be a double edged sword becoming a positive reward to negative behavior and reinforcing the behavior. None the less, we need to use this support to release the 5150 and allow treatment on a voluntary basis.

Determining safety to release a 5150 for DTS is complex and multifactorial. The above outline is a very broad tool but it will provide some general structure to the clinical assessment.

SPOTLIGHT ON RESEARCH: Family Medicine

The Effect of Three Years of Arrowhead Regional Medical Center Health Fair Screening on Breast Cancer Incidence
Manal Elkarra M.D., David Lanum M.D.
Department of Family Medicine

Purpose

Every year, since 2009, Arrowhead Regional Medical Center (ARMC) has offered free health screenings to members of the local community. Attendees are screened for breast, cervical, colon, skin, oral, and prostate cancer as appropriate. For this type of screening test to be effective, it must detect disease at an earlier and more curable stage. We chose to specifically look at breast cancer screening data collected from these

screenings for the years 2009 through 2011, to determine if the free health screenings detected breast cancer at a rate at least equal to the national average.

Methods

This study was a retrospective analysis. The Administrative Department at Arrowhead Regional Medical Center gathered data for each health screening that included name, screening type, and result. We reviewed the total number of women screened for breast cancer, including those requiring additional investigation beyond screening mammography. We noted how many women had abnormal or inconclusive mammograms, and how many were lost to follow up. The data was used to determine incidence of breast cancer among the women screened at ARMC's free health fairs from 2009 through 2011.

Results

576 women underwent clinical breast exam; 398 women had mammograms. Thirty four women had abnormal findings but failed scheduled follow up at ARMC for further evaluation, either by additional imaging views or biopsy. Four women were diagnosed via breast biopsy with breast cancer and treated. Sixty -three women had initial abnormal findings but after additional imaging or biopsy, were found to have benign changes. The extrapolated breast cancer incidence rate from ARMC's free cancer screening events for the years 2009-2011 is 694 per 100,000 which is far above the average United States' national rate of 125.7 per 100,000.

Conclusion

The Breast Cancer Screening at ARMC was successful in that four women were diagnosed with breast cancer and initiated

appropriate therapy. Extrapolation suggests health fair screenings demonstrate an incidence rate approximately five times that of the national average. Sixty three women underwent additional testing, including breast biopsies, but were found to have benign changes. Also, 34 women had inconclusive findings on their breast exam or mammogram but did not return for scheduled follow up.

Please join me in congratulating
Dr. AHMED DEHAL
for receiving the opportunity to present
his research on the
*Impact of Surgeon Volume on Incidence
and Severity of Neck Hematoma after
Thyroid and Parathyroid Surgery*
at Kaiser Permanente's 10th Annual
National Surgical Symposium in
North Shore Oahu, Hawaii
April 2014

FASCINATING CASE: Sturge-Weber Syndrome

Sarah Kim D.O., Jaskarn Johl D.O., Kris Storkersen M.D.
Ophthalmology

Case Report

We present a case of a 26 year old African American male complaining of occasional sharp pains in his left eye. He states that he was in an altercation 3 weeks prior, where he was kneed in his left eye. He has chronic floaters, but denies loss of vision, flashes, photophobia or any other visual symptoms.

The patient denies any medical or surgical history, as well as use of any medications. Upon further questioning, the patient admits

to having been diagnosed with glaucoma in the left eye at 16 years old, and being given an eye medication which he did not continue to use. He also admitted to a questionable seizure once, possibly associated with past substance use.

On examination, the patient's visual acuity without correction is 20/20 right eye (OD) and 20/30 left eye (OS). Pupils are both round and reactive, with no afferent pupillary defect noted. Intraocular pressures measured with a tonopen are 14 OD, and 24 OS. Extraocular muscle movements and confrontational visual fields are intact bilaterally.

Partial ptosis of the left upper eyelid is noted. When questioned, the patient states his eyelids have been asymmetrical since birth. Upon closer examination, there is a subtle rose-colored pigmentation over the patient's left eyelids in the V1 and V2 distributions of the trigeminal nerve that is easily missed due to the patient's darker skin complexion.

The anterior segment examinations of both eyes are normal. Dilated fundoscopic examination shows cupping of the left optic nerve. Retinal Optical Coherence Tomography (OCT) imaging of the optic nerve head and retinal nerve fiber layer (RNFL) shows cup-to-disc ratios of 0.24 OD and 0.79 OS, and mild RNFL thinning in the left eye relative to the right.

The patient's diagnosis is (1) Sturge-Weber Syndrome, with (2) unilateral glaucoma OS secondary to #1. He was started on topical prostaglandin drops, one drop in the left eye every evening, and scheduled for a Humphrey Visual Field test for evaluation of glaucomatous visual field changes.

Discussion

While most primary glaucomas are bilateral, they may present as asymmetric or unilateral. More common causes of unilateral glaucoma include trauma, intraocular neoplasms, drug-induced glaucoma, uveitis, iridocorneal endothelial syndrome, and conditions leading to increased episcleral venous pressure.

Sturge-Weber Syndrome (SWS), also called encephalotrigeminal angiomatosis, is a congenital neurocutaneous disorder that occurs spontaneously during embryonal development. The hallmark characteristic is a Port-wine stain (or nevus flammeus), an angioma on the facial skin, most commonly in the trigeminal nerve's V1 and V2 distributions. SWS rarely presents bilaterally. There are also leptomeningeal angiomas ipsilateral to the Port-wine stain. Consequently, SWS is often associated with developmental delay, seizures, focal deficits, hemiparesis, and headaches.

Ocular manifestations of SWS include glaucoma, iris heterochromia, a “tomato-catsup” colored fundus, retinal vascular tortuosity and hemangiomas of the conjunctiva, episclera, choroid or retina.

Glaucoma occurs in approximately 30-70% of SWS cases, and is usually only present when the Port-wine stain involves the eyelids. It is thought that drainage of the aqueous humor through the Canal of Schlemm and out through the episcleral venous network is influenced by the ratio of intraocular pressure to venous pressure. The vascular abnormality of SWS leads to increased venous pressure, decreased outflow of aqueous humor, increased intraocular pressure and glaucoma.

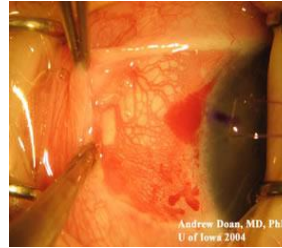


Figure 1 Left: The bulbar conjunctiva is retracted, exposing the dilated episcleral vessels due to increased episcleral venous pressure.

Diagnosis of SWS is usually made on a clinical basis at birth or infancy. However, manifestations and morbidity from the syndrome may not develop until later on in life. Clues that an infant may have glaucoma include photophobia, epiphora (overflow of tears onto the face), blepharospasm, Haab striae on the cornea, large corneas, corneal clouding, and buphthalmos (enlarged eye secondary to increased pressure).



Figure 2: A child with SWS, with a port wine stain involving all the left trigeminal nerve branch distributions. Secondary glaucoma is evident with a seemingly enlarged and stretched globe and cloudy cornea.

Treatment for SWS is symptomatic. Glaucoma secondary to SWS is often resistant to conventional medical treatment and requires surgical intervention. SWS patients with glaucoma must be followed with annual ophthalmic examinations to look for refractive, visual and optic nerve changes.

Research is formalized curiosity. It is poking and prying with a purpose.

-Zora Neale Hurston

NEW INNOVATIONS IN MEDICINE: Medical Oncology

Viet Tran, D.O. PGY II
Internal Medicine

Therapy for cancer has typically been based upon attacking rapidly dividing cells using cytotoxic anti-neoplastic drugs. While this strategy can be effective, chemotherapy has limited specificity. Cells that divide rapidly under normal circumstances, like those in bone marrow, hair follicles, and digestive tract, are also affected. The damaging side effects of chemotherapy have pressed the need for targeted delivery of drugs to tumors. However, the idea of drug-loading nanoparticles and reprogramming cells to attack specific viruses and tumors has been considered science fiction, until now.

“Tumor-targeting therapy” ultimately relies on the premise that tumor cells overexpress specific receptors allowing them to increase uptake of nutrients and vitamins. The concept of using specific receptors to identify and alter tumor cells was first used in the idea of diagnosing cancer by PET scans, in which tumor cells uptake radioactive glucose similar to non-tumor cells; however, due to a cancer cell’s inability to metabolize the radioactive glucose appropriately, diagnosis is established by nuclear medicine techniques. These receptors also distinguish tumor cells structurally and biochemically from normal physiological cells. This feature allows scientists to preferentially target tumor cells using specific ligands.

Earlier this year, a team of researchers led by Drs. Michel Sadelain and Renier J. Brentjens at Memorial Sloan-Kettering Cancer Center adopted this idea to produce an army of T-cells that target the CD19 antigen found on B-cells in patients with acute

lymphoblastic lymphoma (ALL). The process begins by isolating T-cells from the peripheral blood of a healthy donor. The T-cells are then reprogrammed into stem cells. Next, the gene encoding for a chimeric antigen receptor (CAR) for anti-CD19 is incorporated into the stem cells via a disabled retrovirus. These stem cells are then reprogrammed back into T-cells and are replicated 1000-fold. Finally, the resulting cells are injected into the recipient cancer patient.

Results of this new treatment have been promising. All five patients that were given the treatment have gone into remission. Four of those patients ultimately went on to receive bone marrow transplants. This project was especially exciting because these select patients all had refractory ALL, which carries a very poor prognosis. Refractory or relapsed ALL patients are usually resistant to current chemotherapy options and are poor candidates for stem cell transplant.

Despite these results, it is still uncertain what type of cell the researchers created. Dr. Sadelain’s team was able to compare the mRNA expression profiles of the engineered T-cell to the natural T-cells from the donor. The analyses showed that the engineered cells resembled T-cells of the innate immune system as opposed to the adaptive subtype. However, before clinical trials can further proceed, Dr. Sadelain admits there is much more to be known about the cell’s biological nature and how it may affect patients in the future.

Although this idea will continue to be under investigation for now, it is one of the newest innovative approaches in the field of medical oncology. It not only paves the road for better prognostic options for refractory ALL patients, but for many other cancer patients who could potentially benefit from targeted

therapy against their tumors.

RESIDENT COMMENTARY: The Nature of Physicians & Patient Mortality

Mahin Ghanevati, D.O PGY III
Family Medicine

My first encounter with my nursing home patient was unpleasant. I immediately felt his feelings of resentment and distrust. No matter how hard I tried to be kind and gentle towards him, I still felt his dislike and distrust towards me. I thought to myself “I wished I was assigned another patient, one where we could better get along”. With his diagnoses of dementia, diabetes, hypertension, and esophageal ulcer, how could I have a meaningful relationship? After all, I am only visiting him once a month for a short period of time.

“I will just write my monthly progress note and try to address his medical issues and problems as part of residency requirements,” I thought to myself. But then again I knew this is not me, this is not the reason I decided to become a physician. Human “being” an individual’s life is more than just summation of a bunch of numbers to signify a disease, more than just a collection of illnesses. When I imagine myself with my patients not just as a physician but as an ordinary individual; dignity, grace, humanity, spirituality, love, empathy, giving, kindness, and respect are the words and feelings associated with these people that rush through my mind. These added considerations inspire; their absence boils in my blood.

It did not take long before the relationship with my nursing home patient improved drastically, and I completely gained his trust. We started to really enjoy each other’s company, to the extent that it became

harder for both of us to say goodbye after each visit. We were both anticipating and enjoying each monthly visit. It was not because I was taking care of his DM, HTN, or LBP, which he dwelt upon. What connected us and built the trust in our relationship was his simple need for a blanket. He was complaining that he gets cold at night and was not provided with enough blankets, so I made sure he had one. Sometimes we might not realize that fulfilling a simple and basic patient’s needs, whether medically related or not, is all that it takes to create trust to foster a meaningful and fulfilling relationship.

He was happy that he now had a blanket. On every visit, he asked me if he could keep it. “Of course you can, it is yours to keep,” I said each time. “The nurses are not going to take it from me?” he would ask. “No, I spoke with your nurse, and the blanket is yours, no one is going to take it from you,” I replied. I could sense the joy in his eyes, the gratitude and appreciation in his facial expression.

After my physical exam that day, he asked whether I’ll be seeing him next month, I said yes, and we departed. On the way back home I decided to buy him a blanket, and take it to him on my next visit. Nursing homes create an unpleasant feeling, a feeling of sadness, in me. Perhaps it reminds me of my first experience with nursing homes during my medical school years, but even so, I was looking forward to seeing my patient again.

On the way to the nursing home for my monthly visit, I was thinking to myself that it will be hard to say goodbye to him at the end of my residency program. When I got to the nursing home that day, I could not find his chart. I looked into his room and he was not there. He is wheelchair bound and routinely goes to the hallway by the dining room, he was not there either. I went back to the front

reception and asked one of the nurses. She informed me, “He died last week”.

For a moment my brain completely shut down, none of the words I was hearing made any sense. I asked again and I heard the same reply “He died last week,” I asked again and she repeated the same thing. Now the words “he died” started to tunnel into my brain. Suddenly, I was in a state of shock, how is it possible. “What happened?” I asked. “They found him bleeding in his bed in the middle of the night, you can find his chart in the medical record office,” she said. No one knew his exact cause of death. I still could not believe the news; I thought surely there must be a mistake. I checked his room once again. I went to the Medical Records office. I asked whether they know anything about my friend, I was told the same thing. I grabbed his bulky chart and started looking at his most recent progress notes; nothing was documented about his cause and time of death. I was desperately looking for a clue; went over pages after pages, and nothing.

Was I somehow responsible for his death, did I neglect a medical issue that needed immediate attention? Could I have prevented his death? Where did I go wrong? I’m sure these are some of the questions that cross our mind whenever we are faced with a patient who dies on us.

What was the most shocking about his death was that it was totally unexpected. He did not appear to be unstable or critically ill. I’m certain, there are instances when a patient’s death could be prevented, and there are other instances that, despite the excellent care we provide, death is inevitable. There

was nothing I could have done to prevent his death, but why is it so difficult to deal with a patient’s death or death in general? Is it lost, guilt, sense of failure, unspoken words or deeds? Why does it have such a profound impact? Even if we don’t admit to it, it forever transforms us.

Reflecting on the relationship between the physician and the mortality of patients, some interesting insights follow....

The medical profession has made it its mission to keep death at bay and save lives. When death occurs, it is often viewed as a failure of medicine or the attending physician. An aversion towards death also makes it difficult for physicians to communicate the “bad news” to patients and their family members in an honest and caring manner.

It is my belief that we cannot live indefinitely in a culturally and psychologically induced state of denial. The fact is that death is all around us, above us, below us and inside us. Death is you and death is me. Death lies dormant in every human being. We all need to confront the unsettling reality of personal mortality.

I believe how a person dies in this world is as important as how he or she lives. Ultimately, what matters and is comforting is dying with grace and dignity. As physicians, this is what we owe to our dying patients. I still think of the bond I built with my patient, especially when I go to the nursing home. I feel fortunate to have been a part of his journey in life.

It is my pleasure to congratulate Dr. Katie Huynh for being nominated to present her poster on
Interpreting Intraoperative Neurophysiological Monitoring Signal to Avoid Complications in Cerebrovascular Surgery: Case Report
At the Dandy 2nd Annual Cerebrovascular Surgery Meeting in
St. Louis, Missouri April 2014

RESEARCH PROJECTS AT ARMC

Are you interested in research? Are you a student, resident, staff, or faculty member at ARMC? Please contact the offices listed below to participate in any of the following ongoing studies. We thank all the faculty primary investigators of the following projects.

Emergency Medicine 909-580-6370	
Alconcel, Franklin D.O PGY III MacNeil, Colin D.O PGY III Yuen, Ho-Wang M.D Kwong, Eugene M.D	Estimated Time of Arrival of EMS for Trauma Alerts and Activations
Alconcel, Franklin D.O PGY III Minahan, Thomas D.O	Jet Ski Douche Injury
Avera, Leigh D.O PGY II Neeki, Michael D.O	The Expanding Role of Paramedics in the Optimal Utilization of Emergency Department Services
Ayvazian, Arbi D.O PGY II Neeki, Michael D.O	1. Manifestation of Necrotizing Fasciitis: A Retrospective Review of Patients Presenting to a San Bernardino County Emergency Department 2. Hemophilia
Batt, Joshua D.O PGY II Neeki, Michael D.O	1. Osteopathic manipulative Treatment in Tarsal Somatic dysfunction: A Case Study 2. Photo of the Month- Eye Emergencies: Retinal Detachment 3. Hypotension After Large Volume Therapeutic Paracentesis in the Emergency Department Myth or Reality?
Begnoche, Amy D.O PGY IV Widenski, Amber D.O PGY III Minahan, Thomas D.O	Tpa in Ischemic Stroke: The Difference Between 3 and 4.5 hours
Begnoche, Amy D.O PGY IV Widenski, Amber D.O PGY III Jones, Kevin, D.O Pennington, Troy D.O Lee, Carol M.D	A Comparison of Outcomes After Intravenous Thrombolysis With Recombinant Tissue Plasminogen Activator
Boulos, Sarah D.O PGY II Yuen, Ho-Wang M.D	1. A Retrospective Review of Anaphylaxis and Allergy Emergencies in the Emergency Department of a Large Urban County Hospital in Southern California 2. Hemophilia 3. Vertebral Artery Dissection
Bronson, James D.O PGY I	1. Cross-Sectional Study of Prevalence of Violence in the ED 2. Comparison of the Efficacy of ER Physician vs Sonographic Directed RUQ U/S for the Diagnosis of Acute Chole
Clark, Carrie PGY Neeki, Michael D.O	1. Methamphetamine and Congestive Heart Failure in Young Adults 2. The Use of TPA in Psychogenic Pseudo Stroke
Clark, Carrie PGY Yuen, Ho-Wang M.D	Methamphetamine and Congestive Heart Failure in Young Adults
Crouch, Andrew D.O PGY II Miulli, Dan D.O Lawrence, Teckah M.Ed Neeki, Michael D.O	Comparative Cerebrovascular Disease and Methamphetamine Abuse: A Population Based Study
Crouch, Andrew D.O PGY II Neeki, Michael D.O Piibe, Remy M.D	1. Do Resident Physicians Know About Cost of Medical Care in Their Hospital? 2. The Effect of Methamphetamine on Size and Distribution of Stroke
Fenati, Greg D.O PGY II Mamic, Marko D.O PGY II Piibe, Remy M.D	Link Between Allergies and Psychological Disorders
Fenati, Greg D.O PGY II Piibe, Remy M.D	Mental Illness and Allergies: Is There a Correlation? A Retrospective Study in an Urban County Hospital Emergency Department.
Lee, David D.O PGY II Nguyen, Anh M.D	Hypotension After Therapeutic Paracentesis in the Emergency Department: Myth or Reality?
Hendy, Dylan D.O PGY I Neeki, Michael D.O	A prospective Randomized Comparative Outcome Study of Emergency Medicine Physician Treatment of Minor Burn After a Short Training Workshop By a Burn Specialist Compared to Burn Specialist Care of Similar Patients.
Hintzsche, Gabriel D.O PGY II Yuen, Ho-Wang M.D	1. A Retrospective Review of Anaphylaxis and Allergy Emergencies in the Emergency Department of a Large Urban County Hospital in Southern California 2. Vertebral Artery Dissection.
Horan, Jennifer H D.O PGY II Lux, Pamela D.O	The Prevalence of Minor Burn Care in the Emergency Department

Neeki, Michael D.O	
Inglis, Travis D.O PGY I Seng, Sakona D.O	A Retrospective Analysis of the Outcome of Patients Diagnosed with Apparent Life Event (ALTE), in the Emergency Department to Determine if the Current Protocol for Work-Up and/or Admission is Warranted
Johansson, Jens D.O PGY II Neeki, Michael D.O Seng, Sakona D.O	1. Early Administration of Long-Acting Insulin in the ER In the Setting of DKA; and Its Impact On Mortality/Morbidity/Length in the ICU/Costs 2. A Case of Suspected Wound Botulism
Johnson, Joshua D.O PGY III Minahan, Thomas D.O	1. Why Would We Interview This Applicant? Items in the Application for Emergency Medicine Residency that really Matter 2. Bath Salts and Increased ICH
Johnson, Joshua D.O PGY III Mittal, Geetanji D.O PGY III	Appropriate Utilization of EMS Transport to the Emergency Department
Johnson, Joshua D.O PGYIII Sin, Arnold M.D	1.What Items on the ERAS Application Correlate Most Closely with Matching to an AOA-Approved Emergency Medicine Residency 2. Survey: Patient Preference Regarding Electronic Communication
Kulczycki, Michael D.O PGY III Neeki, Michael D.O	1. Prevalence of Methamphetamine use Among Young Adults with Congestive Heart Failure 2. Fecaloma with Urinary Retention
Kulczycki, Michael D.O PGY III Nguyen, Ang M.D	Gender Differences in the Association of Methamphetamine Abuse and Congestive Heart Failure
Kuzmack, Edward D.O PGY I Yuen, Ho-Wang M.D Seng, Sakona D.O	A Retrospective Analysis of the Outcome of Patients Diagnosed with Apparent Life Event (ALTE), in the Emergency Department to Determine if the Current Protocol for Work-Up and/or Admission is Warranted
Lee, David D.O PGY II Nguyen, Ang M.D	Hypotension After Large Volume Therapeutic Paracentesis in the Emergency Department
Mamic, Marko D.O PGY III Neeki, Michael D.O Minahan, Thomas D.O	1. EMS Trauma Alerts and Activations Estimated Time of Arrival vs. Actual Time of Arrival 2. Ovarian Torsion Missed on Ultrasound and CT
Mamic, Marko D.O PGY III	Testicular Torsion Study
Mamic, Marko D.O PGY III Neeki, Michael D.O Minahan, Thomas D.O	1. The Rate of Testicular Detorsion in Emergency Medicine: A Survey Study 2. Closed Reduction Technique for a Posterior Sternoclavicular Dislocation: A Case Study 3. Mental Illness and Allergies: Is There a Correlation? A Retrospective Study in Urban County Hospital Emergency Department
Minera, Gabriella D.O PGY IV Neeki, Michael D.O	1. EM Resident Lifestyle Survey (Project) 2. Alcohol Intoxication in a Two-Month-Old (Case Report)
Minera, Gabriella D.O PGY IV Welch, Mary D.O PGY IV	Progressive Lifestyle Changes of Emergency Medicine Residents
Mittal, Geetanji D.O PGY III Neeki, Michael D.O	1. Ambulance Utilization to Arrowhead Regional Medical Center 2. Splenic Infarct Associated with Pseudomonas Bacteremia and Endocarditis
Mistry, Jamshid D.O PGY I Neeki, Michael D.O	Spinal Epidural Abscess, Identifying Challenges in Diagnosis at a Level 2 Trauma Center
Mistry, Jamshid D.O PGY I Piibe, Remy M.D	Case Report: Tension Hydrothorax, an Unusual Case
Mistry, Jamshid D.O PGY I Lux, Pamela D.O	A Novel Approach to Diagnosis. The SEA Score.
Mistry, Jamshid D.O PGY I Neeki, Michael D.O	A Double Blinded Prospective Study: TXA
Nguyen, Edward D.O PGY II Seng, Sakona D.O	1. Early Administration of Levemir in the ER in the Setting of DKA and its Effect on Length of Stay in the ICU, Mortality and Morbidity, and Costs 2. Guillan Barre with Succinylcholine
O'Kelley, Timothy D.O PGY III Toomari, Nojan D.O Kwong, Eugene M.D Davis III, Vivian D.O Neeki, Michael D.O	A Ten-Year Retrospective Review of Survival Outcomes in Patients Undergoing Emergency Thoracotomy at a Level II Trauma Center
Orchard, Derek D.O PGY IV Kwong, Eugene M.D	Survey International Medicine and the Obstacles Involved
Orchard, Derek D.O PGY IV Rundio, Jeffrey D.O. PGY IV Neeki, Michael D.O	What are the CT Ordering Habits of ER Residents, How are They Being Educated, and How are Their Decisions Influenced?
Richard, Aureore D.O PGY I Neeki, Michael D.O	A Prospective Randomized Comparative Outcome Study of Emergency Medicine Physician Treatment of Minor Burn After a Short Training Workshop by a Burn Specialist Compared to Burn Specialist Care of Similar Patients
Rundio, Jeffrey D.O PGY IV Lee, Carol M.D	Survey of Training Practices Regarding the Use of CT Scans in the ED

Than, Tan D.O PGY I Neeki, Michael D.O	Pneumecephalous Post Epidural
Than, Tan D.O PGY I Neeki, Michael D.O	The Expanding Role of Paramedics in the Optimal Utilization of Emergency Department Services
Welch, Mary D.O PGY IV Neeki, Michael D.O	Lifestyles of Emergency Medicine Residents
Widenski, Amber D.O PGY III Lee, Carol M.D	1. A Comparison of Outcomes After Intravenous Thrombolysis With Recombinant Tissue Plasminogen Activator 2. Intracranial Hemorrhage Following Bath Salt Use: A Case Report
Family Medicine 909-580-6236	
Anand, Sumeet D.O PGY III Whitson, Denise FNP	Smoking Cessation: Questionnaire Regarding the Self-Efficacy of Smokers
Diep, David D.O Sim, Genny M.D Mowjood, Siraj D.O	Breast Cancer Screening and Detection at the Mobile Clinic as Compared with the Detection Rates in the County of San Bernardino.
Elkarra, Manal M.D PGY III Lanum, David M.D	The Effect of Three Years of Arrowhead Regional Medical Center Health Fair Screening on Breast Cancer Incidence
Ghanevati, Mahin D.O Brown, Joachim D.O	Idiopathic Acute Transverse Myelitis
Hammes, Jillian, D.O PGY III Brown, Joachim, D.O	Locked-In Syndrome Secondary to Cerebral Infarction Involving the Cervical Spine, Pons and Medulla
Khajehgian, Sara, D.O PGY III Brown, Joachim D.O	Hemihypertrophy with a Ret Oncogene Negative Bilateral Pheochromocytoma, Thyroid Papillary Carcinoma, C-Cell Hyperplasia, Intratechal Nucleus Pulposus, and Breast Fibroadenoma: A Case Report
King, Nathan D.O Balinos, Febbis M.D	Significance of Colon Cancer Screening at ARMC Health Fair
Knotts, Nicole, M.D Balinos, Febbis M.D	A Retrospective Analysis of Prostate Cancer Screening Conducted at Arrowhead Regional Medical Center Cancers Fairs
Nyirenda, Ndeka, M.D PGY III Ebert, Emily M.D	Formalizing a Pathway for Non-Urgent Psychiatric Referrals Between Mckee Family Medicine Clinic and Phoenix Behavioral Health Clinic
Nyirenda, Ndeka, M.D PGY III Ebert, Emily M.D	Performance Improvement Project at McKee Family Health Clinic
Prasad Chandarana, Aarthi, D.O PGY III Brown, Joachim D.O	Implementation of a Patient Centered Medical Home at Fontana Health Center: Identifying Obstacles and Exploring Solutions
Ramirez, Milton M.D, PGY III Balinos, Febbis, M.D	Incidence of Cervical Cancer at Arrowhead Regional Medical Center Cancer Screening Events
Robinson, Emily D.O B. Ito, LCSW	PM Group Visit Pilot
Thomas, Scott, D.O PGY III	Hypertrophic Cardiomyopathy
Tompkins, Michael, D.O PGY III Raval, Niren D.O	Group-Based Lectures for the Patient: An Assessment of Utility and Efficacy
Truong, My-Linh, D.O PGY III Brown, Joachim D.O	Sarcoidosis: A Diagnostic and Therapeutic Challenge
Welch, Patrick D.O PGY III Diep, David D.O PGY II Mowjood, Siraj D.O Gemmell, Eda RN	Evaluating ARMC Mobile Clinic's Effectiveness in Helping to Lower the Rate of Medically Uninsured in the San Bernardino County Through Arrowcare
Internal Medicine 909-580-6266	
Edmunds, Jeff D.O PGY II Shargh, Sean D.O PGY II Arabian, Sarkis D.O	Effect of Enterally Fed Omega-3 Fatty Acids on FiO2 Requirements of Patients with Acute Respiratory Distress Syndrome
Khackekian, Arsineh D.O PGYIII Shargh, Sean D.O PGY II Arabian, Sarkis D.O	1. Pulmonary Lymphangitic Carcinomatosis from Metastatic Gastric Adenocarcinoma: A Case Report
Khackekian, Arsineh D.O PGYIII Zall, Mona D.O PGY III Chequer, Rosemary M.D	A Likely Case of Anti-NMDA-Receptor Encephalitis in a Young Female with Psychiatric Symptoms: A Case Report
Khackekian, Arsineh D.O PGYIII Nowroozi, Michelle D.O PGY III Horns, Richard M.D	The Timely Usage of Neulasta/Neupogen in Prevention of Febrile Neutropenia, in Decreasing Rate of Hospital Admissions, and in Decreasing Length of Hospital Stays for Patients Receiving Chemotherapy
Mehta, Sapna D.O PGY I Shargh, Sean D.O PGY II Arabian, Sarkis D.O	Impact of Prolonged Emergency Room Stay and Delayed Transfer in Critically Ill Patients

Mulroy, Patrick D.O PGY II Tran, Viet D.O PGY II Lowe, Andrew PharmD	Percentage of Patients with Gram Positive Bacteremia, Meningitis, Hospital Acquired Pneumonia, Severe Sepsis, and Septic Shock Who Achieve a Therapeutic Fist Vancomycin Trough
Nanpatee, Natasha D.O PGY II Vahratyan, Rafayel D.O PGY II Platt, Katrina D.O Landis	A Multicenter Study Evaluating the Risk Factors for Development of Acute Renal Failure in Patients with H1N1 Influenza.
Hariri, Omid D.O Khackekian, Arsineh D.O Amin, Jenny D.O Minasian, Tanya D.O Berman, Blake D.O Ritter, Yoav D.O Miulli, Dan D.O Siddiqi, Javed M.D	Acute-Onset Cerebellar Symptoms in Lhermitte-Duclose Disease: Case Report
Richardson, Laura D.O PGY III Sanchez, Gabriel D.O PGY III Sorto, Fernando D.O	A Retrospective Study Evaluating Improved Sensitivity and Specificity in Detecting C. Difficile Infection with Multiple Stool Assays, and a Cost Comparison with PCR for Stool C. Difficile in Adults Admitted to ARMC.
Spence, Courtney D.O PGY III Caberto, Jason D.O PGY III Arabian, Sarkis D.O	Methamphetamine as an Independent Risk Factor for Hemorrhagic Stroke
Wallace, Lorien D.O PGY II Boulos, Sarah D.O PGY II Craig, Debra M.D	ARMC Health Literacy and End of Life Discussions
MFM Fellowship Program	
Carter, Michael D.O PGY IV Roloff, Kristy D.O Valenzuela, G. M.D	Transfusion Practices Based on Number of Prior Cesarean Deliveries at a Teaching Hospital
Roloff, Kristy D.O Brunnabend, Michelle D.O PGY IV Valenzuela, G. M.D	VBAC vs. Repeat Cesarean Delivery: Did the NIH Consensus Statement Impact TOLAC and VBAC Rates at an Institution Already Offering TOLAC?
Roloff, Kristy D.O Valenzuela, G. M.D	Methamphetamine Abuse and Hypertensive Disorders of Pregnancy
Neurosurgery 909-580-1366	
Bieber, Andrew D.O Minasian, Tanya D.O Won, Daniel M.D Miulli, Dan D.O Siddiqi, Javed M.D	Glioblastoma Multiforme and Concomitant Superimposed MRSA Abscess: Case Discussion and Literature Review of a Rare Entity.
Cortez, Vladimir D.O (Fellow)	1.Complexity of Treatment for PICA Aneurysms: A Case Series of Three Patients 2.Increase Incidence of Aneurysmal Rupture of Less than 5mm: Case Series of 24 Patients 3.Venous Anatomic Characterization in Perimesencephalic Spontaneous Subarachnoid Hemorrhage 4.Inadvertent Catheterization of Subclavian Artery Treated with NBCA Glue Embolization: Case Report and Review of Literature
Hariri, Omid D.O Minasian, Tanya D.O Siddiqi, Javed M.D., Ph.D Muilli, Dan D.O	3/2013-Present Traumatic Subarachnoid Hemorrhage and Vasospasms-Possible Treatment Options.
Hariri, Omid D.O Lawandry, Shokry D.O Siddiqi, Javed M.D, Ph.D Muilli, Dan D.O	7/2012-12/2012 Clinical-Indicated for Cerebral Spinal Fluid Surveillance Reliably Predict External Ventricular Drain Associated Ventriculitis, or is Frequent Routine Cerebral Spinal Fluid Surveillance Necessary
Hariri, Omid D.O Farr, Saman MS III Corsino, C. Gupta, R.K. Bieber, Andrew D.O Miulli, Dan D.O Siddiqi, Javed M.D	Third Ventricular Glioblastoma Multiforme: Case Report & Literature Review
Hariri, Omid D.O Khackekian, Arsineh D.O Amin, Jenny D.O Minasian, Tanya D.O Berman, Blake D.O Ritter, Yoav D.O	Acute-Onset of Cerebellar Symptoms in Lhermitte-Duclos Disease: Case Report

Huynh, Katie D.O PGY IV Miulli, Dan D.O	Does Dihydropyridine Calcium Channel Blockers Lower Serum Sodium: Amlodipine vs Nifedipine on Sodium Levels
Huynh, Katie D.O, PGY IV Duong, Jason D.O. PGY I Miulli, Dan D.O.	Validation of the Spinal Instability Neoplastic Score (SINS) Grading Criteria: A Retrospective Chart Review.
Lawandy, Shokry D.O Hariri, Omid D.O Amin, J. Minasian, Tanya D.O Gupta, R. Siddiqi, Javed M.D	Supratentorial Primitive Neuroectodermal Tumor in an Adult: A Case Report and Review of the Literature
Minasian Tanya D.O Hariri, Omid D.O Corsino, C. Farr, Saman MS III	Isolated Lumbar-4 Vertebral Cryptococcosis in an Immune-Competent Patient: A Case Report and Literature Review
Minasian, Tanya D.O Stiner Eric Won, Daniel M.D Siddiqi, Javed M.D	Single Specialty Laparoscopic Approach in Pediatric Ventriculoperitoneal Shunt Placement: Operative Technique
Minasian, Tanya D.O Hariri, Omid D.O Siu, Jonathan MS IV Miulli, Dan D.O Siddiqi, Javed M.D	Disseminated Histoplasmosis with CNS Involvement: Case Presentation, Literature Review and Discussion with an Emphasis on Symptomatic and Radiographic Improvement with Treatment
Minasian, Tanya D.O Hariri, Omid D.O Zhao, Kevin MS II Miulli, Dan D.O Siddiqi, Javed M.D	Cerebral Vasospasm Following Traumatic Subarachnoid Hemorrhage
Miulli Dan D.O Lawrence, Teckah M. Ed Hariri, Omid D.O PGY II Farr, Saman MS-III Dennis, Arielle Gelfenbeyn, Kirill MS-III	Optimal Range for Total Cholesterol in Patients with a Risk of Intracerebral Hemorrhage
Miulli, Dan D.O Dahlin, Robert D.O PGY I Lawrence, Teckah M.Ed.	Developing a Comprehensive Stroke System of Care
Noel, Jerry DO PGY IV Siddiqi, Javed M.D. Miulli, Dan D.O. Andros, Fadi M.D	Investigating Treatments for the Prevention of Secondary Injury and Disability Following Traumatic Brain Injury (TBI), INTREPID
Panchal, Ripul D.O Minasian, Tanya D.O Hariri, Omid D.O Duffner, David M.D Miulli, Dan D.O Siddiqi, Javed M.D	One Year Follow-Up of a Patient After Two Level Extreme Lateral Interbody Fusion (XLIF) with Interlaminar Lumbar Instrumented Fusion (ILIF)
Parsa, Kamran D.O Hariri, Omid D.O Jamshidian, F. Miulli, Dan D.O Siddiqi, Javed M.D	Incidence of Vertebral Artery Injury with Traumatic Cervical Spine Subluxations.
Remakrishnan, Vivek D.O	New Advances in Mechanical/Aspiration Thrombectomy
Lawandy, Shokry D.O Bieber, Andrew D.O Capua, John D.O Parsa, Kamran D.O Taqi, Mohammed M.D Siddiqi, Javed M.D, Ph.D	False Localization in Delayed Presentation of Ruptured Aneurysms: Series of Cases
Siddiqi, Javed M.D Ramakrishnan, Vivek D.O PGY IV	Anti-Epileptic Prophylaxis in Traumatic Brain Injury (TBI) Patients Undergoing Craniotomy vs Decompressive Craniectomy Operations
Siddiqi, Javed M.D Minasian, Tanya D.O PGY III Hariri, Omid D.O	An Analysis of Neuron Specific Enolase (NSE) in Traumatic Brain Injury (TBI) Patients
Ophthalmology 909-583-3419	
Johl, Jaskarn D.O PGY III	Macular Atrophy Associated with Neonatal Alloimmune Thrombocytopenia

Storkensen Kris M.D Suthar, Mukesh M.D Tokuhara, Keith M.D	
Johl, Jaskarn D.O PGY III Storkensen Kris M.D Suthar, Mukesh M.D Tokuhara, Keith M.D	Macular Ischemia Associated with Beurgers Syndrome
Kim, Sarah D.O PGY I Storkensen Kris M.D Tokuhara, Keith M.D	Epidemiology of Corneal Ulcers Seen at ARMC
Pharmacy 909-580-0016	
Lowe, Andrew PharmD	Effect of Ketorolac Tromethamine (Toradol) on Pain Perception and Narcotic Use
Lowe, Andrew PharmD Maciol, Angelika PharmD	Evaluation of Insulin Infusion Protocol in the Intensive Care Units
Lowe, Andrew PharmD Wong, Alison PharmD	Evaluation of High Risk Medication Use in the Elderly
Lowe, Andrew PharmD Nguyen, Frederick PharmD	Effect of Pharmacist Intervention on Post-Discharge Medication Compliance and Incidence of Re-Admission
Psychiatry 909-580-3830	
Nelson, Jared D.O	The Effectiveness of Clozapine in Treating Treatment-Refractory Delusions in Schizophrenia in a Forensic Setting: A Case Series
Tang, Chin D.O	Catatonia Due to Psychosis
Surgery 909-580-3362	
Al-Temimi Mohammed M.D PGY I Johna, Samir M.D	Obesity and its Effects on the Perioperative Outcomes of Pancreaticoduodenectomy: Analysis of the American College of Surgeons National Surgical Quality Improvement Program (ACS NSQIP) Database
Choi, Mark M.D PGY III Narayanan, Rag M.D PGY IV Tang, Taylor M.D PGY V	Use of Seamguard to Prevent Anastomotic Leak in Colorectal Surgery
Choi, Mark M.D PGY III Culhane, Dr. M.D	ERCP at Kaiser vs. ARMC
Choi, Mark M.D PGY III Vo, TD M.D Aka, P M.D Hsu, J M.D Behseresht, J M.D Tayyarah, M M.D	Staged Endovascular Repair of Bilateral Internal Iliac Artery Aneurysms
Dehal Ahmed M.D PGY III	Preoperative Biliary Drainage In Patients with Obstructive Jaundice Due to Pancreatic Head Cancer
Dehal Ahmed M.D PGY III Bae Esther D.O PGY II	Antibiotic Use and Incidence of Pelvic Abscess after Laparoscopic Appendectomy
Dehal, Ahmed M.D PGY III Abbas, Ali M.D Johna, Samir M.D	Co-Morbidity and Outcomes After Surgery Among Women with Breast Cancer: Analysis of National Inpatient Sample Database
Dehal Ahmed M.D PGY III Bae Esther D.O PGY II	Prophylactic Cholecystectomy in Patients with Isolated Choledocholithiasis
Dehal, Ahmed M.D Abbas, Ali M.D Johna, Samir M.D	Racial Disparities in Clinical Presentation, Treatment, and Outcome of Women with Breast Cancer: Analysis of National Inpatient Sample Database
Dehal, Ahmed M.D PGY III Tessier, Deron M.D	Combined Intraoperative and Extraperitoneal Colonic Perforation After Diagnostic Colonoscopy: A Case Report and Literature Review
Dehal, Ahmed M.D PGY III Yamanishi, Frank M.D	Bilateral Laparoscopic Totally Extraperitoneal Repair Without Mesh Fixation of Inguinal Hernia: Results for 686 Inguinal Hernia
Dehal, Ahmed M.D PGY III Zaheer, S. M.D	A Rare Case of Ewing's Sarcoma of the Sternum
Dehal, Ahmed M.D PGY III Hussain, F. M.D	Risk Factors, Clinical, and Economic Consequences of Neck Hematoma After Thyroid and Parathyroid Surgery: Ten Years Analysis of National In-Patient Sample Database
Johan, Samir M.D Tang, Taylor M.D PGY V Saidy, Maryam M.D PGY IV	Enhancing Patient Safety Skills in Surgical Residency: Root Cause Analysis in Morbidity and Mortality Conference-Case Series from Clinical Practice
Kim, Youngjin M.D PGY III Johna, Samir M.D	Laparoscopic Excision of Splenic Artery Aneurysm
Lee Bae-Young M.D Ok Jin-Ju M.D Elsayed A.A.A M.D	Preparative Fasting for Contrast-Enhanced CT: Reconsideration

Kim, Youngjin M.D PGY III Han Dae Hee M.D	
McCague, Andrew D.O Aguiluz, Cesar D.O PGY III Davis, Vivian D.O	Osteopathic Manipulation on Trauma Patients
McCague, Andrew D.O Wong, David M.D	Percutaneous Dilational Tracheostomies in the Emergent Setting
Misra S. M.D Choi, Mark M.D PGY III Livingston, A. M.D Franceschi, D. M.D	The Role of Endoscopic Ultrasound in Assessing Tumor Response and Staging After Neoadjuvant Chemotherapy for Esophageal Cancer
Narayanan, Rag M.D PGY IV Tessier, Deron M.D	Outpatient Lap Chole
Narayanan, Rag M.D PGY IV Johna, Samir M.D	Use of Narratives in Resident Education
Narayanan, Rag M.D PGY IV Tessier, Deron. M.D	Case Report: Permachol Mesh Use in Recurrent Ventral Hernia
Patel, Sunal M.D PGY II Saidy, Maryam M.D PGY IV	A Retrospective Study Comparing Single Incision Lap Choles to Standard Four Port Lap Choles
Patel, Sunal M.D PGY II Saidy, Maryam M.D PGY IV	A Retrospective Clinical Study Comparing EUS, CT Scan and Transabdominal u/s and the Common Bile Duct Diameter Findings
Patel, Sunal M.D PGY II Tumbaga, Gloria M.D PGY III Woodward, Brandon M.D PGY II	A Retrospective Chart Review Looking at Elective Lap Choles and What Factors Led to a Failure in Same Day Discharge After the Procedure
Saidy, Maryam M.D PGY IV Aka, P. M.D Trung, V. M.D Hsu, J. M.D Tayyarah, M. M.D	"Amplatzer Stacking" for the Treatment of Ruptured Aneurysms and Pseudoaneurysms with Short Proximal Necks
Saidy, Maryam M.D PGY IV Tessier, Deron M.D	Single Incision Laparoscopic Surgery: Hype or Reality
Schulz, Katharine D.O PGY I Khan, Sadia D.O PGY IV Quigley, Jeff D.O PGY II	Birads Three Gail Model for Early Breast Cancer Detection
Schulz, Katherine D.O PGY I	1.Ongoing 2014 Prospective Cohort Study on Pre-Hospital Administration of Tranexamic Acid to Trauma Patients to Identify Effects on Mortality and Total Blood Product Usage 2. Ongoing 2014 Investigation of Patients With Hispanic Ethnicity and the GAIL Prediction Model Scoring 3.2013 Case Report: A Rare Case of Acute Pancreatitis with Normal Pancreatic Enzyme 4. Kaiser Permanente, Fontana 2011-2012 Investigation and Report of New Frontiers in Minimally Invasive Management of Gastroduodenal Artery Pseudoaneurysms Through Two Interesting Case Reports 5.2013 Recurrent and Bilateral Carotid Body: Case Report and Literature Review
Tang, Taylor M.D PGY V Aguiluz, Dr. D.O	Case Report on Lap Choledochoscopy, Common Bile Duct Exploration and Retrieval of Stones in Pregnant Patient.
Tang, Taylor M.D Johna, Samir M.D	Laparoscopic Excision of a Pre-Peritoneal Incidentaloma
Tumbaga, Gloria M.D PGY III Vo. Dr. M.D	AVF and Aneurysm
Traditional Year 909-580-1369	
Barahona. Juan D.O. PGY I Miulli, Dan D.O Lawrence, Teckah M.Ed.	The Incidence, Prevalence and Demographics of Stroke in Patients with Traumatic Fractures at Arrowhead Regional Medical Center.
Briden, Danielle DO PGY I Miulli, Dan D.O Lawrence, Teckah M.Ed.	Utilization of the Emergency Department for the Enhancement of Prenatal Care: Defining the ER Physicians Role
Goodman, Seth D.O PGY I Miulli, Dan D.O Lawrence, Teckah M.Ed.	Prevalence of Cellulitis Among Known Illicit Drug Users
Gunasekeran, Niranjan D.O Miulli, Dan D.O Lawrence, Teckah M.Ed	How Physician Communication Affect End of Life Care Decisions
Hosack, Steven D.O Miulli, Dan D.O Lawrence, Teckah M.Ed	Seizure Prophylaxis Following Hemorrhagic Stroke-A Review of AHA Guidelines vs. Clinical Practice at ARMC

Kim, Sarah D.O Miulli, Dan D.O Lawrence, Teckah M.Ed	Chart Review to Investigate the Epidemiology of Corneal Ulcers at ARMC
Le, Triet D.O PGY I Miulli, Dan D.O Lawrence, Teckah M.Ed.	The Use of Insulin Glargine vs. Neutral Protamine Hagedorn for Hyperglycemic Control in Insulin-Dependent Diabetic Woman during Pregnancy
Lugo, Robert D.O Miulli, Dan D.O Lawrence, Teckah M.Ed	Compering Level of Functional Independence after Physical Rehabilitation in Ischemic Stroke Patients by rt-PA Treatment
Shen, Roger D.O Miulli, Dan D.O Lawrence, Teckah M.Ed	Code Strokes and Utilization of Tissue Plasminogen Activator (tPA) Protocols in Acute Ischemic Strokes at ARMC
Villegas, Ryan D.O PGY I Miulli, Dan D.O Lawrence, Teckah M.Ed.	Differentiating Strokes From Stroke Mimics: Defining the Role of the Chief Complaint
Williams, Elaina D.O Miulli, Dan D.O Lawrence, Teckah M.Ed.	Acuity of EMS Calls Transported to ARMC Emergency Department Compared to National Averages
Yee, Brenden D.O Miulli, Dan D.O Lawrence, Teckah M.Ed	The Incidence and Prevalence of Stroke and Its Correlation with Hemoglobin A1C Levels
Transitional Year 909-580-3367	
Eaton, Philip D.O PGY I Craig, Debra M.D	Diffuse Hepatic Infiltration by Small Cell Carcinoma of the Lung Mimicking Alcoholic Cirrhosis
Green, Christopher M.D PGY I Nguyen T.H M.D Jalili M. M.D	The Use of Polyvinyl Alcohol Copolymer in the Setting of Gastro-Intestinal Bleeding
Haddock, Tyson M.D PGY I Raoufi, Kambiz M.D	An African American Woman with Behcet's Disease Complicated by Superficial Abscesses.
Jones, Jeffrey M.D Craig, Debra M.D	Multicentric Plasmacytic Castleman's Disease: A Case Report
Khadem, Nasim M.D PGY I et al.	Characterizing Hypervascular and Hypovascular Metastases and Normal Bone Marrow of the Spine Using Dynamic Contrast-Enhanced MRI
Littell, Kyle M.D PGY I Velasquez, Juan M.D	An Analysis of Anti-Septic Techniques Prior to Intra-Articular Knee Injections
Mahdavi, Paymohn M.D PGY I Raoufi, Kambiz M.D	ARMC MICU Re-Admission Rates
Nguyen, Bac M.D PGY I Craig, Debra M.D	Methicillin-Resistant Staphylococcus Aureus Orbital Cellulitis: A Case Presentation
Panther, David M.D PGY I et al.	Eruptive Keratoacanthoma as a Complication of Fractionated CO2 Laser Resurfacing, and Combination Therapy with Imiquimod and Intralesional Methotrexate.
Patel, Amy M.D PGY I Dr. Melendez	Resident Survey - Use of Electronic Devices in the Hospital for Patient Care.
Craig, Debra M.D Ross, Phillip M.D PGY I Tam, Tiffanie BS	Case Report: Hemoglobin of 1.7G/DL in an Adult with Vague Flue Like Symptoms
Women's Health 909-580-3470	
Brown, Elizabeth D.O PGY III	The Incidence, Indications and Timing of Repeat Cesarean Delivery Prior to 39 Weeks
Brunnabend, Michelle D.O PGY IV Valenzuela, G M.D	1.ACOG VBAC Recommendations: Have They Influenced Physician Practices? 2. VBAC vs. Repeat Cesarean Delivery: Did the NIH Consensus Statement Impact TOLAC and VBAC Rates at an Institution Already Offering TOLAC
Carter, Michael D.O PGY IV	1.Transfusion Practices Based on Number of Prior Cesarean Deliveries at a Teaching Hospital 2.To Evaluate the Incidence and Timing of Transfusion Based on the Presence or Absence of Prior Cesarean Delivery
Kim, Jun D.O PGY IV Valenzeula, G. M.D	1.Methamphetamine Abuse and Hypertensive Disorders in Pregnancy 2. Methamphetamine Abuse and Incidents of Pre-Clampsia
Roloff, Kristy D.O	Methamphetamine Abuse and Hypertensive Disorders of Pregnancy
Stepanyan, Gohar D.O Roloff, Kristy D.O Valenzuela, G. M.D	Umbilical Cord C-Peptide in the Euglycemic Patient Points to Alternative Etiology of Macrosomia in the Non-Diabetic Patient
Valenzuela, G M.D Carter, Michael D.O PGY IV	Incidence of Blood Transfusion During or Immediately After Cesarean Section
Valenzuela, G M.D Roloff, Kristy D.O	1.Pitocin Augmentation 2. IADPSG GDM Guidelines: Does Changing the Diagnostic Criteria for Gestational Diabetes Affect Incidence of GDM or Birth Weight in a County Institution

3. To Decrease the Cesarean Section Rate, We Need to Focus on Avoiding the First One- A Review of Oxytocin Use at a County Hospital

Emergency Medicine 909-580-6370

Alconcel, Franklin D.O PGY III MacNeil, Colin D.O PGY III Yuen, Ho-Wang M.D Kwong, Eugene M.D	Estimated time of arrival of EMS for trauma alerts and activations.
Batt, Joshua D.O PGY II Piibe, Remy M.D	
Begnoche, Amy D.O PGY IV Widenski, Amber D.O PGY III Minahan, Thomas D.O	Tpa in Ischemic Stroke: The difference between 3 and 4.5 hours
Clark, Carrie PGY Yuen, Ho-Wang M.D	Methamphetamine and Congestive Heart Failure in Young Adults
Crouch, Andrew D.O PGY II Miulli, Dan D.O Lawrence, Teckah M.Ed Neeki, Michael D.O	Comparative Cerebrovascular Disease and Methamphetamine abuse: A Population Based Study
Fenati, Greg D.O PGY II Mamic, Marko D.O PGY II Piibe, Remy M.D	Link between allergies and psych disorder
Lee, David D.O PGY II Nguyen, Anh M.D	Hypotension after Therapeutic Paracentesis in the Emergency Department: Myth or Reality?
Horan, Jennifer H D.O PGY II Lux, Pamela D.O	Minor burn care in the Emergency Department
Johnson, Joshua D.O PGY III Mittal, Geetanjali D.O PGY III	Appropriate Utilization of EMS Transport to the Emergency Department
Johnson, Joshua D.O PGY III Sin, Arnold M.D	1.What Items on the ERAS Application Correlate Most Closely with Matching to an AOA-Approved Emergency Medicine Residency 2. Survey: Patient Preference Regarding Electronic Communication
Kulczycki, Michael D.O PGY III Nguyen, Ang M.D	Gender Differences in the Association of Methamphetamine Abuse and Congestive Heart Failure
Mamic, Marko D.O PGY II	Testicular Torsion Study
Minera, Gabi D.O PGY IV Welch, Mary D.O PGY IV	Progressive lifestyle changes of Emergency Medicine Residents
O'Kelley, Timothy D.O PGY III Neeki, Michael D.O	A ten-year retrospective review of survival outcomes in patients undergoing emergency thoracotomy at a level II trauma center
Orchard, Derek D.O PGY IV Kwong, Eugene M.D	Survey International Medicine and the Obstacles Involved
Rundio, Jeffrey D.O PGY IV Lee, Carol M.D	Survey of Training Practices Regarding the Use of CT Scans in the ED

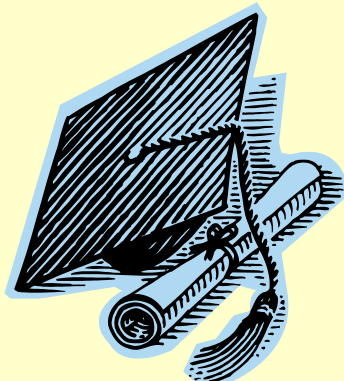
Family Medicine 909-580-6236

Anand, Sumeet D.O PGY III Whitson, Denise FNP	Smoking Cessation: Questionnaire Regarding the Self-Efficacy of Smokers
Elkarra, Manal M.D PGY III Lanum, David M.D	The Effect of Three Years of Arrowhead Regional Medical Center Health Fair Screening on Breast Cancer Incidence
Hammes, Jillian, D.O PGY III Brown, Joachim, D.O	Locked-In Syndrome Secondary to Cerebral Infarction Involving the Cervical Spine, Pons and Medulla
Khajehgian, Sara, D.O PGY III Brown, Joachim D.O	Hemihypertrophy with a Ret Oncogene Negative Bilateral Pheochromocytoma, Thyroid Papillary Carcinoma, C-Cell Hyperplasia, Intratechal Nucleus Pulposus, and Breast Fibroadenoma: A Case Report
Knotts, Nicole, M.D Balinos, Febbis M.D	A Retrospective Analysis of Prostate Cancer Screening Conducted at Arrowhead Regional Medical Center Cancers Fairs
Nyirenda, Ndeka, M.D PGY III Ebert, Emily M.D	Formalizing a Pathway for Non-Urgent Psychiatric Referrals Between Mckee Family Medicine Clinic and Phoenix Behavioral Health Clinic
Prasad Chandarana, Aarthi, D.O PGY III Brown, Joachim D.O	Implementation of a Patient Centered Medical Home at Fontana Health Center: Identifying Obstacles and Exploring Solutions
Ramirez, Milton M.D, PGY III Balinos, Febbis, M.D	Incidence of Cervical Cancer at Arrowhead Regional Medical Center Cancer Screening Events
Thomas, Scott, D.O PGY III	Hypertrophic Cardiomyopathy
Tompkins, Michael, D.O PGY III Raval, Niren D.O	Group-Based Lectures for the Patient: An assessment of Utility and Efficacy

Truong, My-Linh, D.O PGY III Brown, Joachim D.O	Sarcoidosis: A Diagnostic and Therapeutic Challenge
Welch, Patrick D.O PGY III Diep, David D.O PGY II Mowjood, Siraj D.O Gemmell, Eda RN	Evaluating ARMC Mobile Clinic's Effectiveness in Helping to Lower the Rate of Medically Uninsured in the San Bernardino County through Arrowcare
Internal Medicine 909-580-6266	
Khackekian, Arsineh D.O PGYIII Shargh, Sean D.O PGY II Arabian, Sarkis D.O	Pulmonary Lymphangitic Carcinomatosis from Metastatic Gastric Adenocarcinoma: A Case Report
Khackekian, Arsineh D.O PGYIII Zall, Mona D.O PGY III Chequer, Rosemary M.D	A Likely Case of Anti-NMDA-Receptor Encephalitis in a Young female with Psychiatric Symptoms: A Case Report
Khackekian, Arsineh D.O PGYIII Nowroozi, Michelle D.O PGY III Horns, Richard M.D	The Timely Usage of Neulasta/Neupogen in Prevention of Febrile Neutropenia, in Decreasing Rate of Hospital Admissions, and in Decreasing Length of Hospital Stays for Patients Receiving Chemotherapy
Richardson, Laura D.O PGY III Sanchez, Gabriel D.O PGY III Sorto, Fernando D.O	A Retrospective Study Evaluating Improved Sensitivity and Specificity in Detecting C. Difficile Infection with Multiple Stool Assays, and a Cost Comparison with PCR for Stool C. Difficile in Adults Admitted to ARMC.
Neurosurgery 909-580-1366	
Huynh, Katie D.O PGY IV Miulli, Dan D.O	Does dihydropyridine calcium channel blockers lower serum sodium: amlodipine vs nifedipine on sodium levels.
Huynh, Katie D.O, PGY IV Duong, Jason D.O. PGY I Miulli, Dan D.O.	Validation of the spinal instability neoplastic score (SINS) grading criteria: a retrospective chart review.
Noel, Jerry DO PGY IV Siddiqi, Javed M.D. Miulli, Dan D.O. Andros, Fadi M.D	Investigating Treatments for the Prevention of Secondary Injury and Disability Following Traumatic Brain Injury (TBI), INTREPID.
Miulli Dan D.O Lawrence, Teckah M. Ed Hariri, Omid D.O PGY II Farr, Saman MS-III Dennis, Arielle Gelfenbeyn, Kirill MS-III	Optimal Range for Total Cholesterol in Patients with a Risk of Intracerebral Hemorrhage
Miulli, Dan D.O Dahlin, Robert D.O PGY I Lawrence, Teckah M.Ed.	Developing a comprehensive stroke system of care
Siddiqi, Javed M.D Ramakrishnan, Vivek D.O PGY IV	Anti-Epileptic Prophylaxis in Traumatic Brain Injury (TBI) Patients undergoing Craniotomy vs Decompressive Craniectomy Operations
Siddiqi, Javed M.D Minasian, Tanya D.O PGY III	An analysis of neuron specific enolase (NSE) in traumatic brain injury (TBI) patients
Ophthalmology 909-583-3419	
Johl, Jaskarn D.O PGY III Storkensen Kris M.D Suthar, Mukesh M.D Tokuhara, Keith M.D	Macular Atrophy Associated with Neonatal Alloimmune Thrombocytopenia
Johl, Jaskarn D.O PGY III Storkensen Kris M.D Suthar, Mukesh M.D Tokuhara, Keith M.D	Macular Ischemia Associated with Beurgers Syndrome
Kim, Sarah D.O PGY I Storkensen Kris M.D Tokuhara, Keith M.D	Epidemiology of Corneal Ulcers seen at ARMC
Pharmacy 909-580-0016	
Lowe, Andrew PharmD	Effect of Ketorolac Tromethamine (Toradol) on Pain Perception and Narcotic Use
Lowe, Andrew PharmD Maciol, Angelika	Evaluation of Insulin Infusion Protocol in the Intensive Care Units
Lowe, Andrew PharmD Wong, Alison	Evaluation of High Risk Medication Use in the Elderly
Lowe, Andrew PharmD Nguyen, Frederick	Effect of Pharmacist Intervention on Post-Discharge Medication Compliance and Incidence of Re-Admission
Surgery 909-580-3362	
Choi, Mark M.D PGY III Narayanan, Rag M.D PGY IV Tang, Taylor M.D PGY V	Use of Seamguard to prevent anastomotic leak in colorectal surgery

Choi, Mark M.D PGY III Culhane, Dr. M.D	ERCP at Kaiser vs. ARMC
Dehal Ahmed M.D PGY III	Preoperative Biliary drainage In Patients with Obstructive Jaundice due to Pancreatic Head Cancer.
Dehal Ahmed M.D PGY III Bae Esther D.O PGY II	Antibiotics Use and Incidence of Pelvic Abscess after Laparoscopic Appendectomy
Dehal Ahmed M.D PGY III Bae Esther D.O PGY II	Prophylactic Cholecystectomy In Patients with Isolated Choledocholithiasis.
McCague, Andrew D.O Aguiluz, Cesar D.O PGY III Davis, Vivian D.O	Osteopathic manipulation on trauma patients
McCague, Andrew D.O Wong, David M.D	Percutaneous dilational tracheostomies in the emergent setting
Narayanan, Rag M.D PGY IV Tessier, Dr. M.D	Outpatient lap chole
Narayanan, Rag M.D PGY IV Johna, Dr.	Use of narratives in resident education
Narayanan, Rag M.D PGY IV Tessier, Dr. M.D	Case report: permachol mesh use in recurrent ventral hernia
Patel, Sunal M.D PGY II Saidy, Maryam M.D PGY IV	A retrospective study comparing single incision lap choles to standard four port lap choles
Patel, Sunal M.D PGY II Saidy, Maryam M.D PGY IV	A retrospective clinical study comparing EUS, CT scan and transabdominal u/s and the common bile duct diameter findings
Patel, Sunal M.D PGY II Tumbaga, Gloria M.D PGY III Woodward, Brandon M.D PGY II	A retrospective chart review looking at elective lap choles and what factors led to a failure in same day discharge after the procedure.
Shulz, Katharine D.O PGY I Khan, Sadia D.O PGY IV Quigley, Jeff D.O PGY II	Birads Three Gail Model for Early Breast Cancer Detection
Tang, Taylor M.D PGY V Aguiluz, Dr. D.O	Case report on lap choledochoscopy, common bile duct exploration and retrieval of stones in pregnant patient.
Tumbaga, Gloria M.D PGY III Vo. Dr. M.D	AVF and aneurysm.
Traditional Year 909-580-1369	
Barahona. Juan D.O. PGY I Miulli, Dan D.O Lawrence, Teckah M.Ed.	The Incidence, Prevalence and Demographics of Stroke in Patients with Traumatic Fractures at Arrowhead Regional Medical Center.
Briden, Danielle DO PGY I Miulli, Dan D.O Lawrence, Teckah M.Ed.	Utilization of the Emergency Department for the Enhancement of Prenatal Care: Defining the ER Physicians Role
Goodman, Seth D.O PGY I Miulli, Dan D.O Lawrence, Teckah M.Ed.	Prevalence of Cellulitis among Known Illicit Drug Users
Le, Triet D.O PGY I Miulli, Dan D.O Lawrence, Teckah M.Ed.	The Use of Insulin Glargine vs. Neutral Protamine Hagedorn for Hyperglycemic Control in Insulin-Dependent Diabetic Woman during Pregnancy
Villegas, Ryan D.O PGY I Miulli, Dan D.O Lawrence, Teckah M.Ed.	Differentiating Strokes From Stroke Mimics: Defining the Role of the Chief Complaint
Transitional Year 909-580-3367	
Eaton, Philip D.O PGY I Craig, Debra M.D	Diffuse Hepatic Infiltration by Small Cell Carcinoma of the Lung Mimicking Alcoholic Cirrhosis
Green, Christopher M.D PGY I Nguyen T.H Jalili M.	The Use of Polyvinyl Alcohol Copolymer in the Setting of Gastro-Intestinal Bleeding
Hadduck, Tyson M.D PGY I Raoufi, Kambiz M.D	An African American Woman with Behcet's Disease Complicated by Superficial Abscesses.
Jones, Jeffrey M.D Craig, Debra M.D	Multicentric Plasmacytic Castleman's Disease: A Case Report
Khadem, Nasim M.D PGY I et al.	Characterizing Hypervascular and Hypovascular Metastases and Normal Bone Marrow of the Spine using Dynamic Contrast-Enhanced MRI
Littell, Kyle M.D PGY I Velasquez, Juan M.D	An Analysis of Anti-Septic Techniques Prior to Intra-Articular Knee Injections

Mahdavi, Paymohn M.D PGY I Raoufi, Kambiz M.D	ARMC MICU Re-Admission Rates
Nguyen, Bac M.D PGY I Craig, Debra M.D	Methicillin-Resistant Staphylococcus Aureus Orbital Cellulitis: A Case Presentation
Panther, David M.D PGY I et al.	Eruptive Keratoacanthoma as a Complication of Fractionated CO2 Laser Resurfacing, and Combination Therapy with Imiquimod and Intralesional Methotrexate.
Patel, Amy M.D PGY I Dr. Melendez	Resident Survey - Use of Electronic Devices in the Hospital for Patient Care.
Craig, Debra M.D Ross, Phillip M.D PGY I Tam, Tiffanie BS	Case Report: Hemoglobin of 1.7G/DL in an Adult with Vague Flue Like Symptoms
Womans Health 909-580-3470	
Stepanyan, Gohar Roloff, Kristy Valenzuela G. M.D	Umbilical Cord C-Peptide in the Euglycemic Patient Points to Alternative Etiology of Macrosomia in the Non-Diabetic Patient
Valenzuela, G M.D Carter, Michael D.O PGY IV	Incidence of Blood Transfusion During or Immediately After Cesarean Section
Valenzeula, G. M.D Roloff, Kristy D.O	To Decrease the Cesarean Section Rate, We Need to Focus on Avoiding the First One- A Review of Oxytocin Use at a County Hospital
Kim, Jun DO PGY IV Valenzeula, G. M.D	Methamphetamine Abuse and Incidents of Pre-Clampsia
Brunnabend, Michelle D.O PGY IV Valenzuela, G M.D	ACOG VBAC Recommendations: Have They Influenced Physician Practices?
Valenzuela, G M.D Roloff, Kristy D.O	Pitocin Augmentation
Valenzuela, G M.D Roloff, Kristy D.O	IADPSG GDM Guidelines: Does Changing the Diagnostic Criteria for Gestational Diabetes Affect Incidence of GDM or Birth Weight in a County Institution
Roloff, Kristy D.O	Methamphetamine Abuse and Hypertensive Disorders of Pregnancy



**Congratulations to all the
 Arrowhead Regional Medical Center
 2014 Residency Graduates**

@ YOUR LIBRARY

New books in the library:

The 5 Minute Clinical Consult, 2013

Author: Domino, Frank J.

Call Number: REF WB 102 F58 2013

AMA Manual of Style: A Guide for Authors and Editors

Author: Iverson, Cheryl

Call Number: REF WZ 345 A511 2007

Bates' Guide to Physical Examination and History Taking

Author: Bickley, Lynn S.

Call Number: WB 205 B583 2013

Best Practices in Infection Control: An International Handbook

Author: Soule, Barbara M.

Call Number: WX 167 B561 2012

Clinical Application of Mechanical Ventilation

Author: Chang, David W.

Call Number: WF 145 C456c 2014

Clinical Gynecologic Oncology

Author: DiSaia, Philip J.

Call Number: WP 145 D611 2012

Current Medical Diagnosis & Treatment, 2014 (AVAILABLE in AccessMedicine)

Author: Papadakis, Maxine A.

Call Number: REF WB 141 C976 2014

First Aid for the Family Medicine Boards

Author: Le, Tao

Call Number: LIB OFF WB 18.2 L433 2013

Health Care Information Systems: A Practical Approach for Health Care Management

Author: Wager, Karen A.

Call Number: WA 26.5 W25 2013

The ICU Book

Author: Marino, Paul L.

Call Number: REF WX 21 M3395 2014

Introduction of Clinical Informatics

Author: Degoulet, Patrice

Call Number: W 26.5 D319 1996

Ocular Differential Diagnosis

Author: Roy, Frederick Hampton

Call Number: WW 18.2 R888 2012

PDR: Physician's Desk Reference 2013

Author: Medical Economics Company

Call Number: REF QV 772 P578 2013

Practical Guide to Clinical Computing Systems

Author: Payne, Thomas H.

Call Number: WX 26.5 P895 2008

Proceedings of ARMC Research Conference

Author: Lanum, David

Call Number: REF W 89 L22 2006+

Public Health Informatics and Information**Systems**

Author: O'Carroll, Patrick W.

Call Number: WA 26.5 P976 2003

Spencer's Pathology of the Lung

Author: Hasleton, P. S.

Call Number: WF 600 S746 2013

Swanson's Family Medicine Review: A Problem-Oriented Approach

Author: Tallia, Alfred F.

Call Number: LIB OFF WB 18.2 S972 2013

The Wills Eye Manual

Author: Gerstenblith, Adam T.

Call Number: WW 18.2 W741 2012

Please Note:

MD Consult will phase out by December, 2013. It will be migrated to a more robust database called ClinicalKey. Use this link to try it out - <https://www.clinicalkey.com/>. One of the features in ClinicalKey is Presentation Maker. It is designed to save you time while sharing vital clinical content. You can drag and drop the images you find within ClinicalKey into a presentation layout that is easily exported as a PowerPoint presentation.

	ClinicalKey MD Consult	
Books	1,000+	50
Journals	500+	54
Clinics	53	31
Procedures Consult	312	--
Clinical Trials	135,000	--
First Consult Monographs	800+	800+



**WELCOME
INCOMING
2014 INTERNS!!**

Important Numbers

ARMC

400 North Pepper Ave
Colton, CA 92324

JARMC & Research Coordinator:

Teckah Lawrence

Phone:

909-580-6337

Fax:

909-580-6369

E-mail:

lawrencete@armc.sbcounty.gov

Institutional Review Board:

Cheryl Ives-IRB Secretary

Phone:

909-580-6365

Email:

IvesC@armc.sbcounty.gov

The schedules for the following issues are:

2nd Issue 2014

History of Medicine	OB/Gyn
How I do it	Traditional
Spotlight on Research	Surgery
Fascinating Case	Neurosurgery
Innovations in Medicine	ER

3rd Issue 2014

History of Medicine	Psychiatry
How I do it	Family Medicine
Spotlight on Research	Ophthalmology
Fascinating Case	Internal Medicine
Innovations in Medicine	Ob/Gyn

Dates to remember...

- ✚ **GRADUATION: 2014 Resident Graduation Saturday June 7th at the University of Redlands**
- ✚ **ORIENTATION: Incoming 14-15 Intern Orientation Week of June 9, 2014**
- ✚ **OPTI RESEARCH DAY: OPTI-West Research Conference Wednesday, August 20, 2014 in the Oak Room**